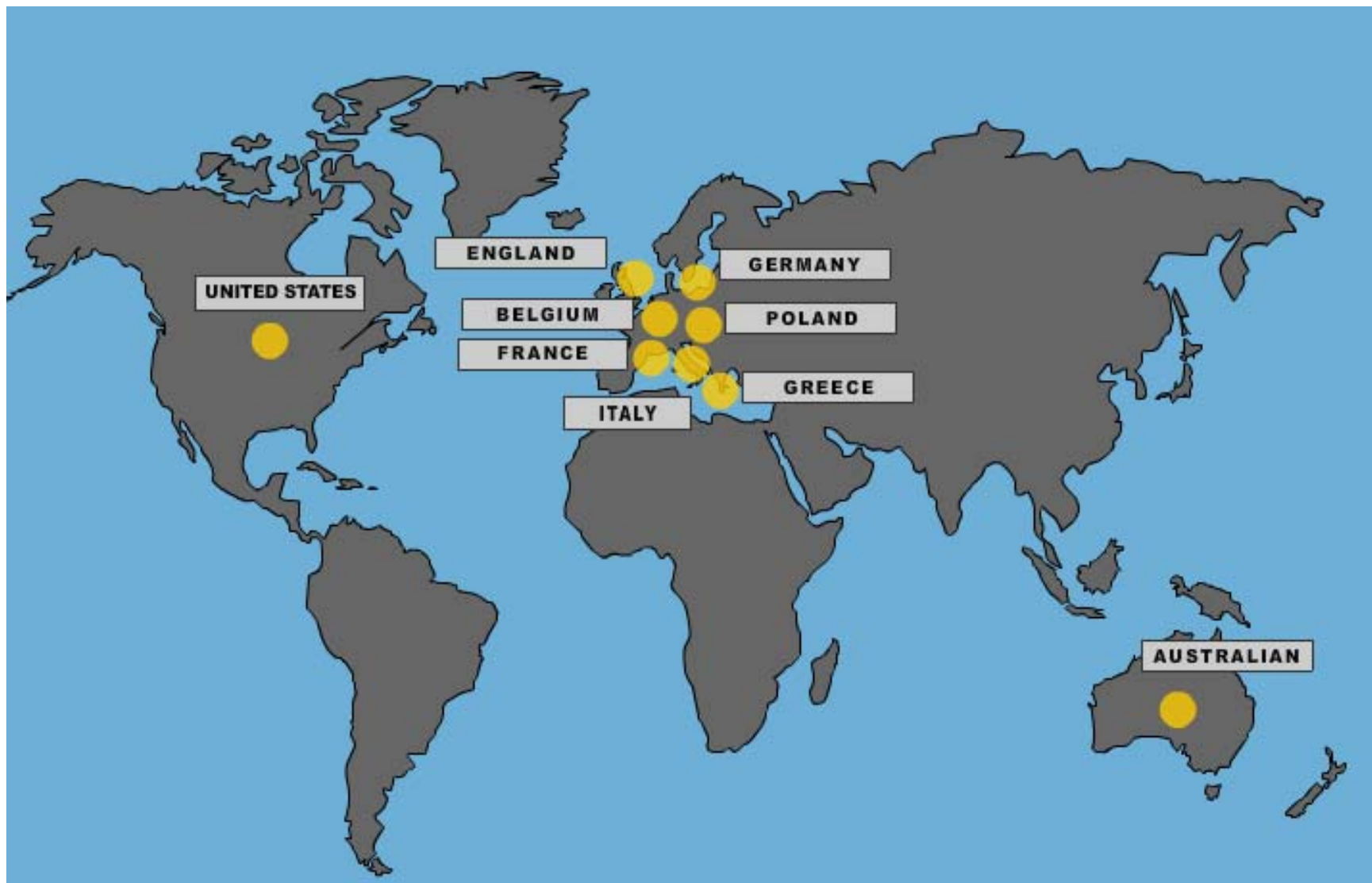


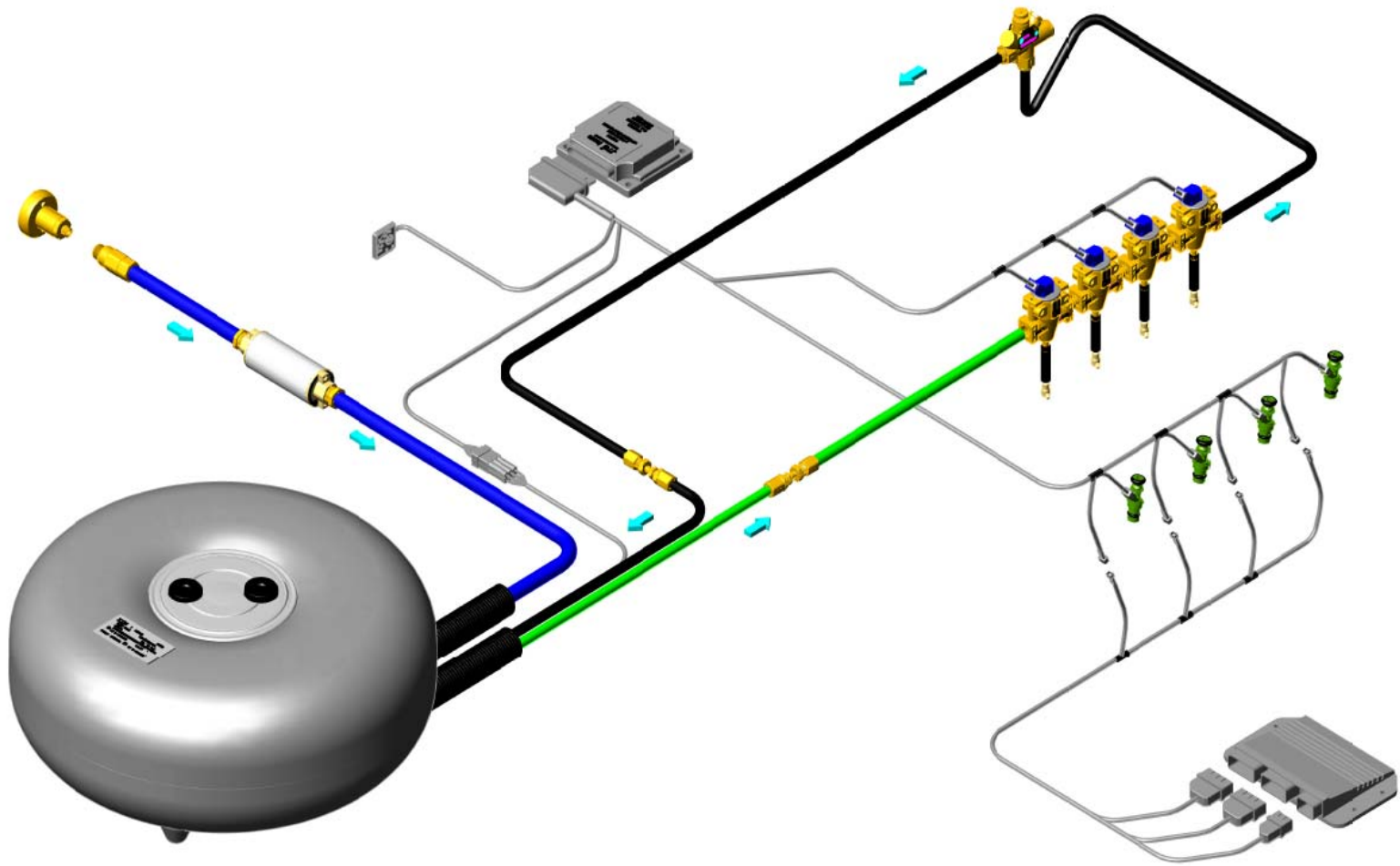
Icom[®] S.p.A.

- Icom S.p.A., founded in Italy 1984
- Icom is an ISO 9001 and 14001 Certified company
- Icom invented the toroidal LPG tank
- Icom holds numerous patents on tanks and lpg systems
- Icom has manufactured over 2 million LPG vehicle tanks
- Icom holds many EN67 certifications



Icom S.p.A.'s Distribution Centers





- Icom invented the revolutionary JTG liquid LPG injection system
- Icom invented the electronically-controlled LPG multivalve
- Icom is an OEM supplier to Renault, Peugeot, Citroen, Ford, GM, and FIAT in Europe
- Icom has three production facilities in Italy, and over 150 employees



54790 Grand River Ave, New Hudson, MI 48165 USA

- **Icom North America is an Oakland County Emerging Sector company**
- **The State of Michigan's Economic Development Corporation and Oakland County's development office worked closely with Icom North America to encourage and facilitate Icom's transition to Michigan**
- **Michigan is positioning itself to be the dynamic Green Belt industry state**
- **The Green Belt is Michigan's initiative to become the alternative fuel's hotspot of North America**



- **Icom NA opened their North America headquarters and assembly plant in New Hudson, Michigan in the Spring of 2008.**
- **Icom NA assembles tanks from Icom and Slegers at the New Hudson Plant and is further domesticating Icom JTG components.**
- **Slegers is the Icom NA cylindrical tank supplier under license from Icom.**



CLEANFUEL

USA

LPI

ENGINE SYSTEMS



PROPANE
EXCEPTIONAL ENERGY®



BLUE BIRD

THE ALL-NEW
BLUE BIRD PROPANE VISION



- The Icom JTG system is configured to US needs and requirements by the technical staff at Icom and CleanFUEL USA to meet US standards.
- CleanFUEL USA utilizes the ICOM JTG LPG systems for their LPI engine applications utilizing CleanFUEL USA's proprietary calibrations.
- Clean FUEL USA is the Icom NA U.S. distributor / vehicle integrator and has achieved numerous EPA + CARB certifications.



CLEANFUEL

USA

LPI

ENGINE SYSTEMS





As a supplier to the Roush LPI F-150 pickup truck, Icom with Roush developed a unique system which caters to the needs of the US OEM Market.

SLEEGERS

Tanks Inc.

- **Sleegers group founded 1963**
 - 980 Green Valley Road, London, Ontario
- **Products:**
 - Propane transportation fuel tanks
 - Filter vessels
 - Steam vessels
 - Size range is 6" to 24" diameter and lengths up to 10'
 - Repair and alteration of pressure vessels, piping and fittings
- **Capabilities:**
 - Pressure Vessel Engineering
 - In house design using Auto-Cad, Solid works, and FEA
 - In-depth experience and understanding of:
 - ASME Codes
 - NFPA Codes
 - CSA Codes
 - Title 13
 - RRC of Texas

SLEEGERS

Tanks Inc.

Certifications held:

ASME U & UM

National Board

TSSA

**Manufacture of pressure vessels to CSA B51 and ASME Section VIII,
Div 1**

Fabrications and assembly to ASME B31.1 and to ASME B31.3

Transport Canada, TC 331

Texas Railroad Commission

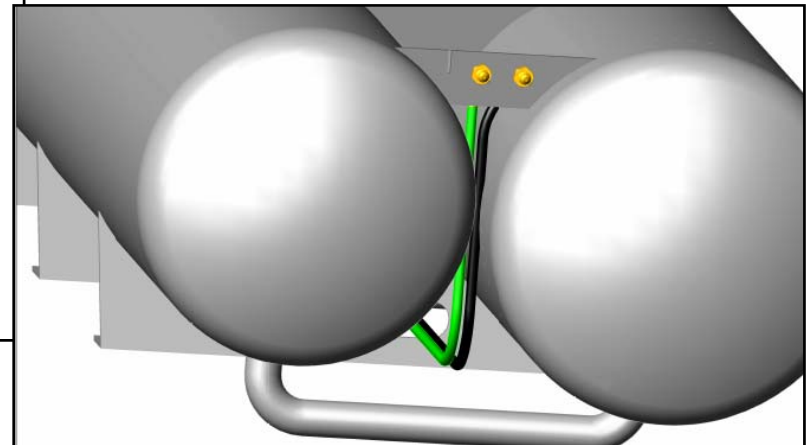
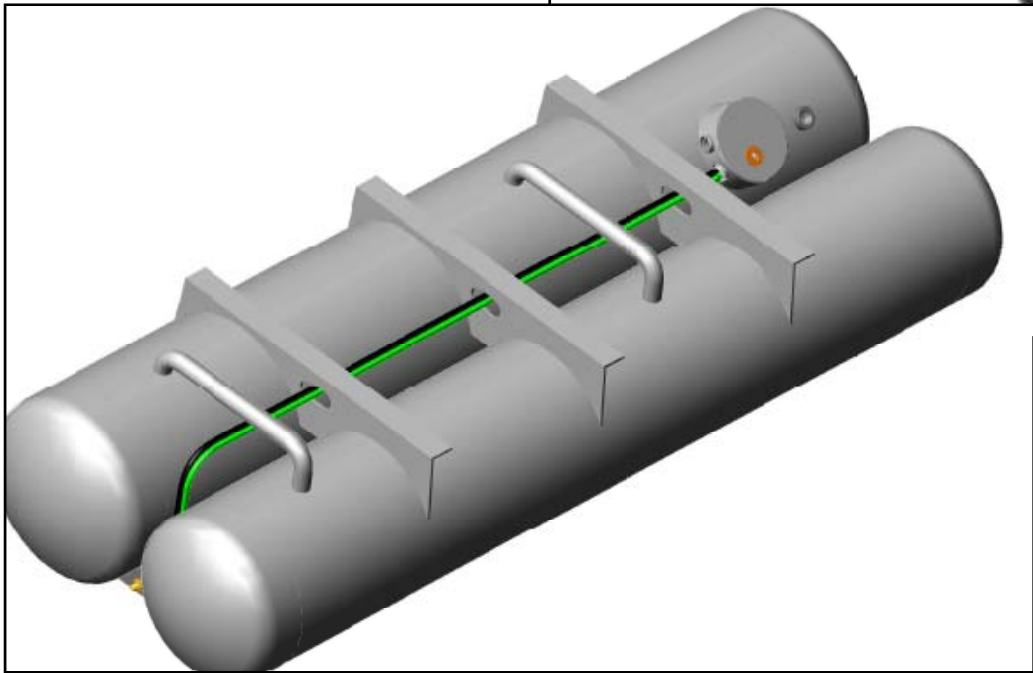
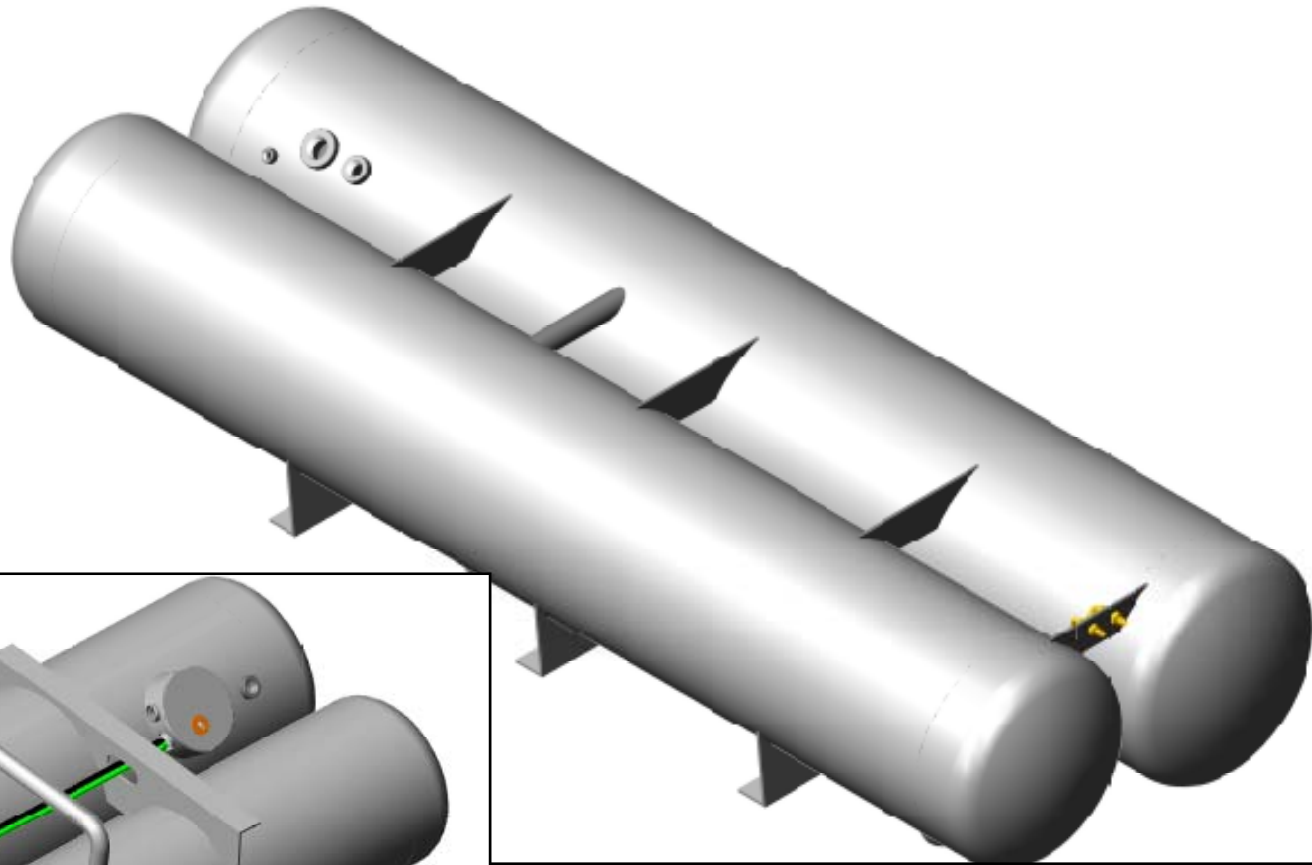
CRN's and Annex G certifications for Propane Motor Fuel Tanks

BlueBird

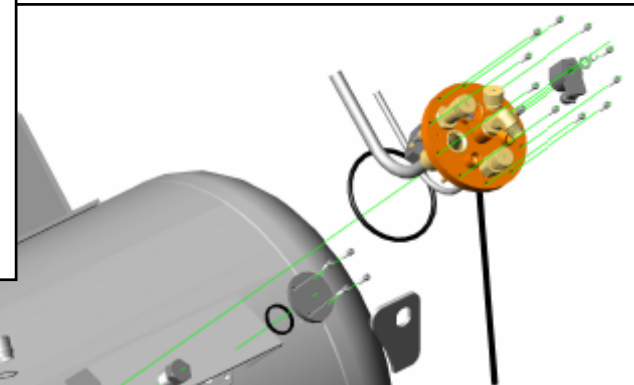
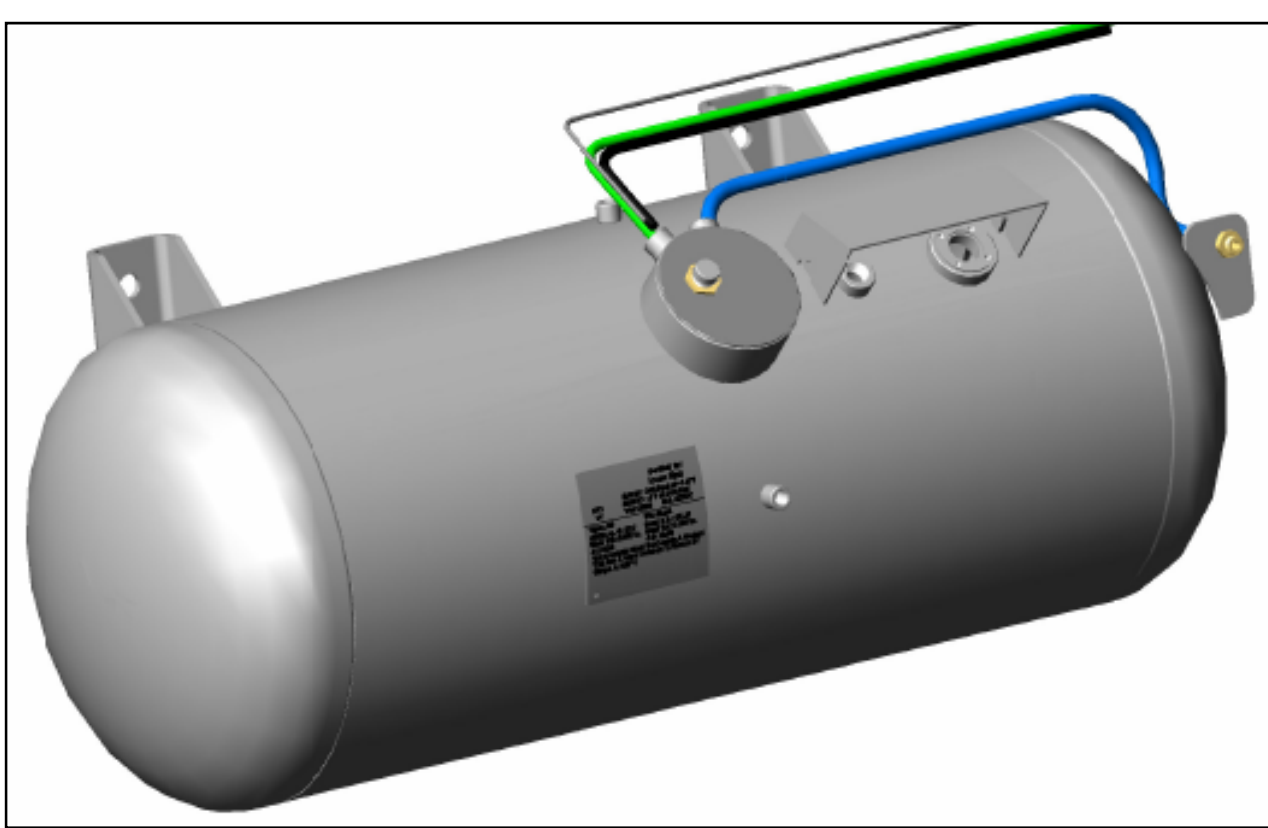
Manifold tank:

81.9 gallons of WC

Size: 310/350 x 1925

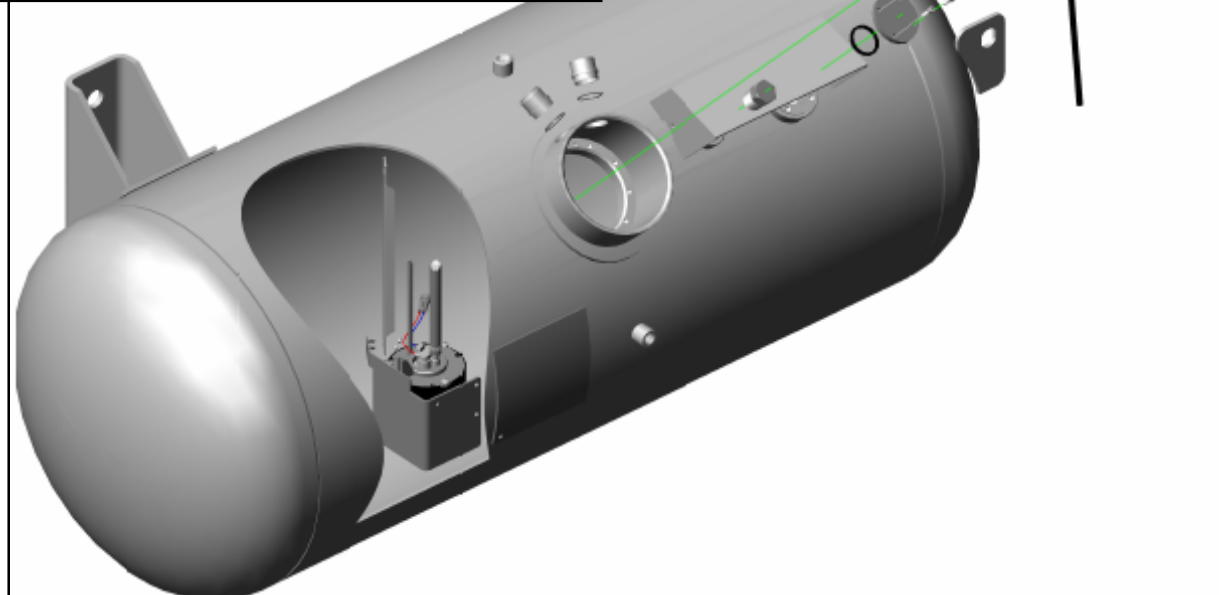


Examples of our horizontal tanks

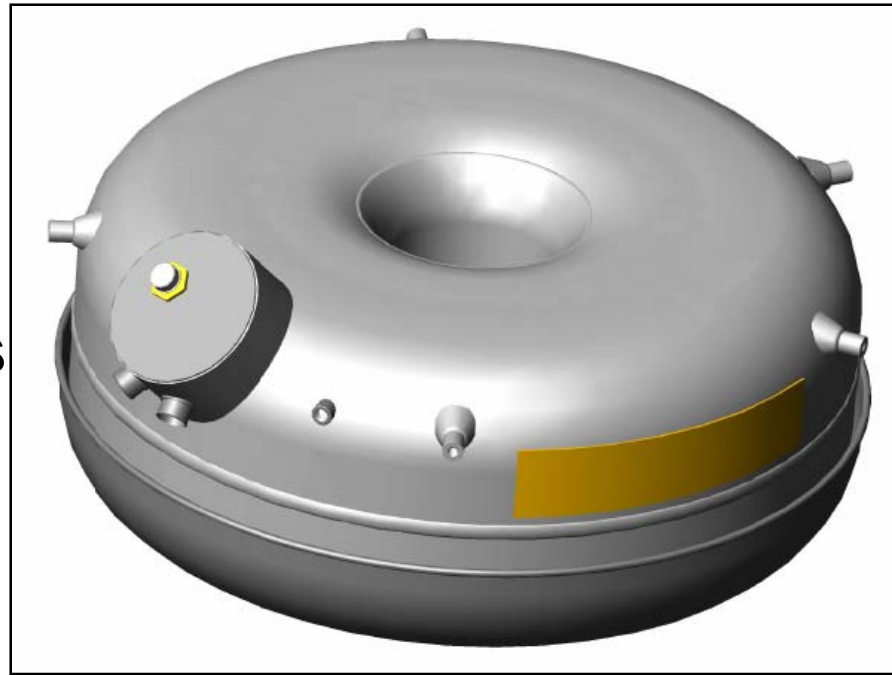


- **50 gallons of WC
(500 x 1310);**

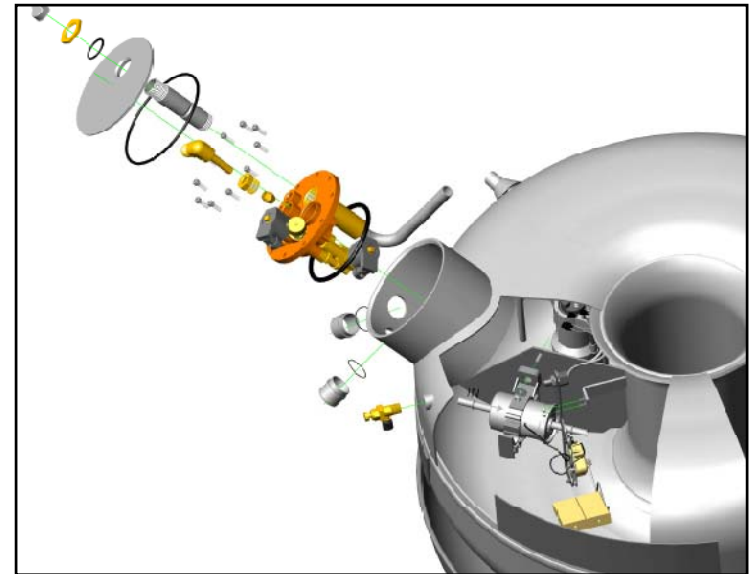
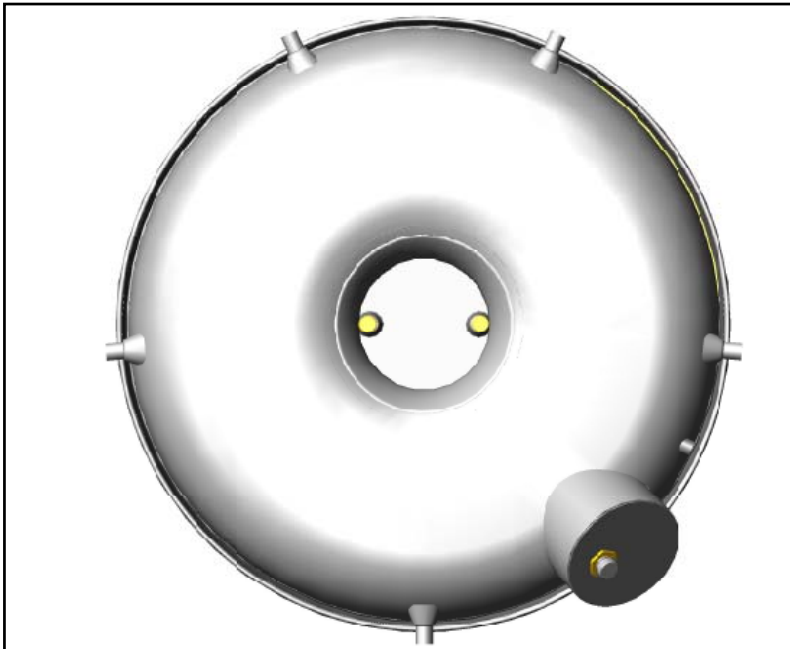
- **65 gallons of WC
(500 x 1710).**



Toroidal tank:
Size: 720 x 300
WC: 28.5 gallons



**Multiple
sizes
available**



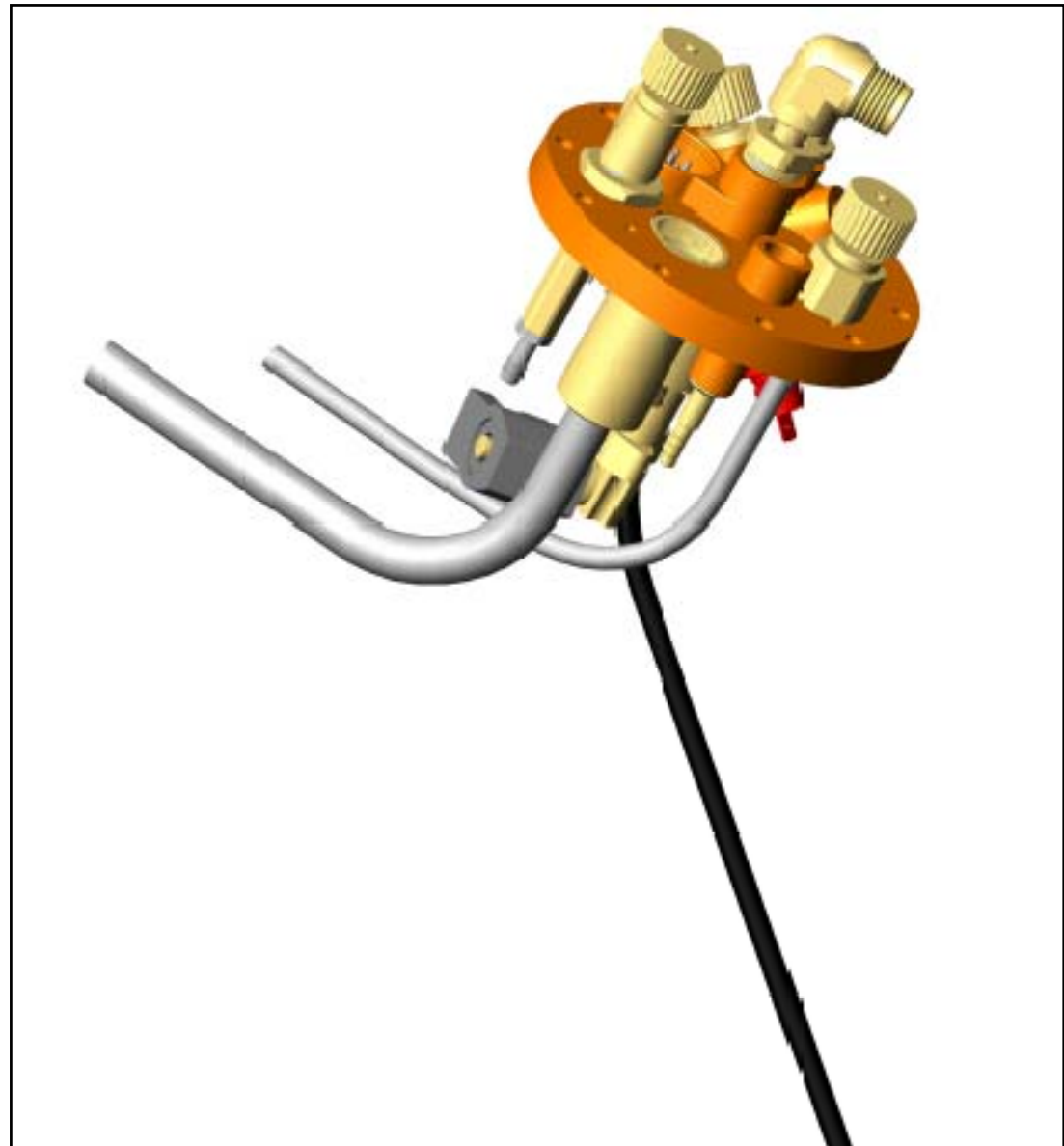
Tank Considerations

- Designed and manufactured to ASME Code
- NFPA and CSA B149.5 add additional design and test conditions
 - Valve protection
 - Valve types
 - Bracket design
 - Corrosion allowance
 - Design pressure and temperature

GM Multivalve

Equipment:

- Excess flow valve on supply line;
- Double back check valve on return line
- Pressure relief valve
 - Bleeder valve
- Harness connection
- Filling pressure sensor



JTG Liquid LPG Injection System

Means a different approach to Automotive LPG!



More Power

More Torque

Improved Efficiency

Improved Reliability

Lower Emissions



JTG[®] MEANS O.E.M. QUALITY STANDARD

The JTG System does not require invasive installation on existing mechanical and electronic components.

The original gasoline ECU is used to drive the JTG operations!

The JTG[®] System has a uniquely innovative LPG tank with Integrated LPG pump



The Icom JTG[®] System is the ONLY solution for very low temperatures!



The JTG[®] System allows the vehicle to utilize LPG dedicated engines also with extremely cold temperatures

Propane-Powered JTG Saturn Hybrid



Propane-Powered JTG Saturn Hybrid



Commutator – for the LPG level indication and to switch from petrol to LPG (normally in automatic mode) and from LPG to petrol



ICU – to control LPG injectors, pump, by-pass, switch



Regulator – to maintain the right LPG pressure into the system and LPG in liquid phase, with the by-pass system for the initial purge

Propane-Powered JTG Saturn Hybrid



LPG rail – to inject LPG directly on the manifold, maintaining the same injection direction of the petrol injectors



Remote fill valve – fixed externally on the vehicle with a bracket



Toroidal tank – fixed to the vehicle with brackets, with the manual 80% bleeder for filling and with the air box connected externally