



Verano 6.0L V8
2008 LY6

6.0L Gen-IV LY6 LPI System



Program Objective:

To develop, validate, certify and commercialize the Liquid Propane Injection system for monofuel operation on applications employing the engine certification level pertaining to:

- EPA / CARB 2009 / 2010 Exhaust Emissions
- EPA / CARB 2009 / 2010 Evaporative Emissions
- 50 State OBD-II Compliance



- PERC Co-Funded Program
- Strategic Partners:
 - ICOM - LPI Core Technology, Component Design & Validation, Component Assembly, Packaging Expertise
 - Millbrook Proving Grounds, UK (GM center of expertise)
- Project began in January 2008
- Anticipated Launch in July / August 2009



Target Design Criteria:

ENGINE / VEHICLE PERFORMANCE

Horse Power / Torque: Equal to original gasoline specifications (323 hp)

Functionality / Drivability: Equal to or better than original gasoline specifications

Fuel Economy: Not to exceed 15% loss of fuel economy from gasoline

Durability: Meet GM gasoline durability requirements



Target Design Criteria:

VEHICLE CHARACTERISTICS

Vehicle Range:	Minimum of 300 miles, at 80% of maximum load
Safety Compliance:	In Accordance with FMVSS, CMVSS & NFPA 58
Warranty:	Equal to original GM gasoline model warranty
Service Requirements:	Not to exceed 5% of gasoline scheduled maintenance cost.
Target MSRP:	\$9,500 for base tank configuration



Product Improvements

Fuel Rail:

- Improved fuel pressure consistency & stability
- Faster starting purge time
- Rails retain OEM mounting hardware & clearances

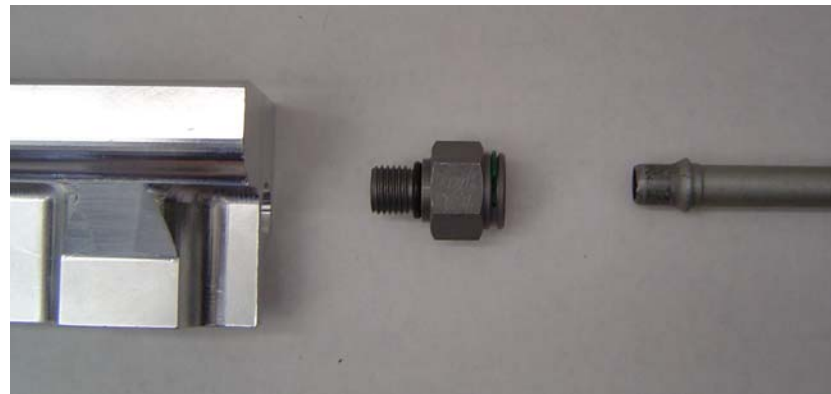




Product Improvements

Fuel Lines:

- Increased flow rate, larger ID
- Improved Materials, Poly Hose / Hard Line Combination
- Quick Connect Fittings

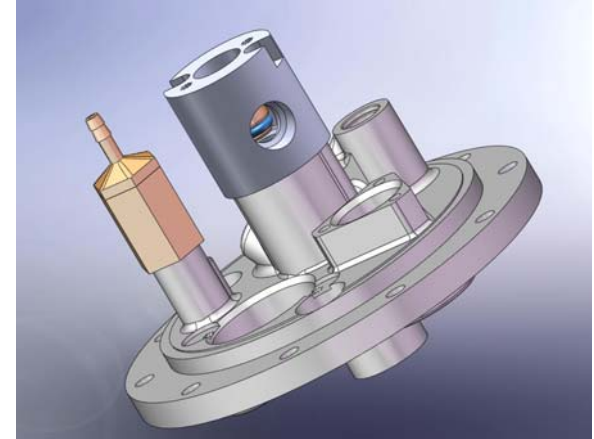




Product Improvements

Multi-Valve:

- Higher flow ports for more stable pressure
- Modified for Quick-Connect couplings
- Improved fill rate





Product Improvements

Fuel Injectors:

- Faster Open time
- Shorter pulse width
- Reduced leak rate





Cut-Van Applications





HD Chassis Cab & Box Delete Applications





Cab Over Applications





 **CLEANFUELUSA**
Tomorrow's Fuels Today